

The New Guinean species of the genus *Platycyon* HANSEN, 1999
(Coleoptera, Hydrophilidae)
by Franz HEBAUER

ABSTRACT

Additional to 6 species of *Platycyon* described by Hansen 1999, 15 species are described (all from New Guinea): *Platycyon biguttatus* sp. n., *P. biroi* sp. n., *P. bisignatus* sp. n., *P. bistriguttatus* sp. n., *P. guttalis* sp. n., *P. guttifer* sp. n., *P. latior* sp. n., *P. minor* sp. n., *P. nabirensis* sp. n., *P. nigrifrons* sp. n., *P. opacipennis* sp. n., *P. quadriguttatus* sp. n., *P. rufoguttatus* sp. n., *P. striatoguttatus* sp. n., *P. sulcatus* sp. n. A key to all known species is given. The male genitalia of the new species are figured.

KEY WORDS

Coleoptera, Hydrophilidae, *Platycyon*, taxonomy, new species, New Guinea.

INTRODUCTION

The genus *Platycyon* was established by HANSEN 1999 with the description of six species from New Guinea, New Britain and New Ireland.

This genus belongs to the tribe Megasternini, though the superficial resemblance suggests membership of the tribe Coelostomatini. The species resemble typical *Dactylosternum* in their flat and elongate body shape with 10 well developed elytral striae and compact antennal club, but are easily separated from *Dactylosternum* by their underside. The mesosternal elevation is elongate and very narrow, in some species somewhat keel-shaped, not separated from metasternum by a deep gap. The metasternum has anterolateral arcuate ridges corresponding to the arc described by the tips of the posterior femora. Femoral lines are absent. All femora have sharply defined tibial grooves on their inner face. The basal piece of aedeagus is twisted as in *Cercyon*. The known species are of moderate size (2.2-4.3 mm).

As in all interrelated genera the sole use of external characters is not successful because of the extensive similarity of some species. It is necessary to dissect every specimen of a series.

It is to be expected that species of this genus also occur in Australia.

ABBREVIATIONS

- CHG - Coll. F. Hebauer, Grafing
- NME - Naturkundemuseum Erfurt (M. Hartmann).
- NMW - Naturhistorisches Museum Wien (M. Jäch, S. Schödl).
- TMB - Természettudományi Múzeum Budapest (O. Merkl, G. Szél)

I thank all persons and institutions who enabled this paper with loan of material and for providing paratypes of the new species. I warmly thank Professor Garth Foster for correcting the English manuscript.

KEY

- 1 Elytra with obvious reticulate microsculpture in posterior half or more. _____ 2
 - Elytra without evident reticulate microsculpture. _____ 9
- 2 Elytral striae very fine and superficial apically. Interstices flat, very finely punctate. Apical segment of maxillary palpi not distinctly longer than penultimate segment. Size 3.6-4.0 mm. [New Britain, New Ireland]. _____ *P. superficialis* HANSEN.
 - Elytral striae stronger, distantly impressed apically. Interstices here somewhat convex. _____ 3
- 3 Elytra with reticulate microsculpture only in posterior half. _____ 4
 - Elytra entirely reticulate microsculptured; punctuation on head strong and dense. _____ 6
- 4 Parameres broader, apices obliquely truncate. Size: 3.2-3.5 mm. [New Britain] _____ *P. subopacus* HANSEN
 - Parameres slender, apices narrowly rounded. _____ 5
- 5 Penis without subapical constriction. Size: 3.0-4.3 mm. [New Guinea NE]. _____ *P. wauensis* HANSEN
 - Penis slightly constricted subapically. Size: 3.3-3.4 mm. [Irian Jaya]. _____ *P. confusus* HANSEN
- 6 Elytra entirely dull ferruginous, with yellow base and apex. Size: 2.5-2.7 mm. [New Guinea NE]. _____ *P. opacipennis* sp. n.
 - Reticulate microsculpture less evident in anterior half. Punctuation on head and pronotum strong and very dense. _____ 7
- 7 Elytra apically narrowed, lateral margins not visible from below. Clypeus and middle of postfrons reddish. Antennal club entirely yellow. Punctuation on pronotum of two different sizes. Parameres shorter and rather broad apically. _____ 8
 - Elytra apically broadly rounded, lateral margin visible from below, at least apically. Punctuation on pronotum moderately fine, rather dense. Parameres more elongate, more slender apically. Size: 3.0-4.1 mm. [New Guinea, Irian Jaya]. _____ *P. reticulatus* HANSEN
- 8 Apical segment of maxillary palpi distinctly longer than penultimate. Mesosternal tablet narrow lancet-shaped, ventrally plain, finely punctate. Penis about as broad as parameres. Size: 3.0-3.5 mm. [New Guinea]. _____ *P. biroi* sp. n.
 - Apical segment of maxillary palpi not distinctly longer than penultimate. Mesosternal tablet lance-shaped, distinctly margined ventrally. Penis much narrower than parameres. Size: 3.0 mm. [Irian Jaya]. _____ *P. nabirensis* sp. n.

The New Guinean species of the genus *Platycyon* Hansen, 1999

- 9 Elytra unicoloured. _____ 10
 - Elytra with distinct spots or stripes. _____ 14
- 10 Apical segment of maxillary palpi distinctly longer than penultimate.
 Fore angles of pronotum not distinctly pale. Parameres much shorter
 than median lobe. _____ 11
 - Apical segment of maxillary palpi not distinctly longer than penultimate.
 Fore angles of pronotum obviously pale. _____ 12
- 11 Elytral striae finely and sharply impressed. Interstices finely and
 moderately densely punctate. Margin of pronotum and elytra paler.
 Parameres reaching apical fifth of median lobe. Size: 2.6-3.5 mm.
 [New Guinea NE]. _____ ***P. striatus* HANSEN**
 - Elytral striae not impressed basally, strongly impressed apically.
 Apices slightly explanate. Interstices with fine, moderately dense punctation.
 Punctuation on pronotum extremely fine, lunulate. Mesosternal tablet very
 elongate and narrow, widest anteriorly, evenly narrowed and pointed
 posteriorly. Parameres reaching mid of median lobe.
 Size: 2.8-3.0 mm. [Irian Jaya]. _____ ***P. sulcatus* sp. n.**
- 12 Elytral series not impressed in basal and apical third. Head entirely black.
 Antennal club dark, except apical half of last segment. Pronotal punctation
 moderately fine, dense. Size: 2.2 mm. [Irian Jaya]. _____ ***P. nigrifrons* sp. n.**
 - Elytral series distinctly impressed also in basal third. _____ 13
- 13 Clypeus piceous, at least slightly red on anterior margin.
 Size: 2.2 mm. [Irian Jaya]. _____ ***P. latior* sp. n.**
 - Clypeus distinctly reddish (with narrow dark midline). Size: 2.1-2.8 mm.
 All segments of antennal club yellow. Punctuation on pronotum moderately
 fine, normal. [Irian Jaya]. _____ ***P. minor* sp. n.**
- 14 Elytra only with stripes. Testaceous; elytra slightly explanate, with a
 black discal patch on anterior half and a V-shaped figure in apical half.
 Interstices convex. Size 3.4 mm. [New Guinea NE]. ***P. striatoguttatus* sp. n.**
 - Elytra with spots. _____ 15
- 15 Elytral spots in anterior and posterior half present. _____ 16
 - Elytral spots in anterior half only. Head reddish. _____ 18
- 16 Two pairs of spots present. First pair of rounded yellow spots subbasally
 covering interstices 5-7; second pair of rounded spots subapically covering
 interstices 2-4. Antennal club yellow. Size: 3.0-3.5 mm.
 [New Guinea SE]. _____ ***P. quadriguttatus* sp. n.**
 - Three pairs of elytral spots present. _____ 17
- 17 One pair of round spots in anterior half covering interstices 6-7,
 and two pairs of transverse spots in posterior half covering interstices 2-6.
 Size: 2.8-3.0 mm. [New Guinea NE]. _____ ***P. guttifer* sp. n.**

- Two pairs of round elytral spots in anterior half covering interstices 5-7 and (behind) 2-3, and one pair of transverse spots in posterior half covering interstices 2-7. Size: 2.4-3.0 mm. [New Guinea NE]. _____ *P. bistriguttatus* sp. n.
- 18 More reddish elytral spots covering interstices 6-7 near base. Antennae yellow except 1st and 2nd segment of club. Parameres slender, much longer than basal piece. Size 2.9 mm. [New Guinea SE]. _____ *P. rufoguttatus* sp. n.
- More yellowish elytral spots only covering interstices 5-7 _____ 19
- 19 Mesosternal tablet elongate parallel-sided. Parameres parallel-sided at outer margin; tips bent inwards. Size: 2.3-2.8 mm. [Irian Jaya]. _____ *P. bisignatus* sp. n.
- Mesosternal tablet elongate lance-shaped, broadest behind middle. _____ 20
- 20 Parameres broad, strongly curved at outer margin, median lobe narrow. Size: 2.7-2.9. [New Guinea NE; Irian Jaya]. _____ *P. biguttatus* sp. n.
- Parameres slightly sinuate in apical half of outer margin. Size: 2.5 mm. [New Guinea SE]. _____ *P. guttalis* sp. n.

THE SPECIES

1. *Platycyon biguttatus* sp. n.

LOCUS TYPICUS: New Guinea NE.

Holotypus (male): 2.7 x 1.8 mm. N. Guinea, Biró 1901/ Mt. Hanseman, Astrolabe Bay. (TMB).- Paratypes: 1 female (same data, CHG);

1 male: Indonesia, Irian Jaya, Nabire area, road Nabire-Illaga, km 62, 03°30'936" S/ 135°41'945" E, 250 m NN, X. 1997, LEK, leg. M. Balke. (NME).

Two single females from different localities without a male probably belonging to *P. biguttatus* are not included in the paratype series: 1 female: N. Guinea, Biró 1899/ Sattelberg, Huon Golf (TMB); 1 female: Indonesia, Irian Jaya, Nabire area, road Nabire-Illaga, 03°29'517" S/ 135°43'913" E, 750 m NN, X. 1997, LEK, leg. M. Balke. (CHG).

DIAGNOSIS: Next to *P. guttalis* and not possible to separate with certainty from that species without a male from same locality, though the present known distribution of both species does not overlap. From the allied *P. bisignatus* both species differ in the shape of the mesosternal tablet, more parallel-sided in the latter while lance-shaped in *P. biguttatus* and *P. guttalis*.

DESCRIPTION: Length 2.7-2.9 mm.- Surface piceous-black, shining; elytra without reticulate microsculpture, with a pair of round yellow spots near base.

Head reddish, except hind margin, shining, coarsely and densely punctate; apical segment of maxillary palpi not distinctly longer than penultimate; 1st and 2nd segments of antennal club dark, apical segment white. Pronotum less coarsely, less densely punctate than head, piceous with dark red margin and fore angles. Elytra shining piceous-black, without evident reticulate microsculpture; broadly oval, rather convex, apically broadly rounded, margin hardly visible from below, except apically;

The New Guinean species of the genus *Platycyon* Hansen, 1999

punctured series rather coarse, not distinctly striate; interstices plain, nearly impunctate; a pair of well delimited round yellow spots near base covering interstices 5-7.- Mesosternal tablet elongate lance-shaped, widest a little behind middle, ca. 5 x as long as wide, narrowed both anteriorly and posteriorly, finely rugosely punctate.- Aedeagus large, with narrow tongue-shaped median lobe, slightly constricted medially; parameres wide, strongly curved at outer margin. (Fig. 11).

ETYMOLOGY: From Latin: bis = twice; gutta = drop.

2. *Platycyon biroi* sp. n.

LOCUS TYPICUS: New Guinea.

Holotypus (male): 3.0 x 2.0 mm. N. Guinea, Biró 1901/Friedrich-Wilh.-Hafen. (TMB).- Paratypes: 6 females (same data, TMB, CHG); 1 female: I. Destacs Biró 1901. (TMB).

DIAGNOSIS: Females of this species are difficult to separate from *P. nabirensis*, though the latter shows an apical segment of maxillary palpi not distinctly longer than penultimate. In *P. reticulatus* the elytral margin is distinctly visible from below.

DESCRIPTION: Length 3.0-3.5 mm.- Surface piceous with red frons and sides of pronotum.- Head moderately finely densely punctate. Clypeus and anterior part of postfrons red. Antennae yellow. Apical segment of maxillary palpi distinctly longer than penultimate. Pronotum with broadly reddish sides; punctation of different size. Elytra black, entirely covered with reticulate microsculpture, though less in anterior half; slightly narrowed apically; lateral margin not visible from below. Mesosternal tablet elongate lance-shaped to narrow pentagonal, ca. 4 x as long as wide, very finely punctate.- Aedeagus very slender with parallel-sided parameres; the median lobe ca. as broad as parameres. (Fig. 7).

ETYMOLOGY: This species is dedicated to its discoverer Dr Biró, formerly at the Temészettudományi Múzeum Budapest.

3. *Platycyon bisignatus* sp. n.

LOCUS TYPICUS: Irian Jaya.

Holotypus (male): 2.3 x 1.5 mm. Indonesia, Irian Jaya, Nabire area, road Nabire-Illaga, km 62, 03°30' 936"S/ 135°41' 945"E, 250 m NN, X.1997, LEK, leg. M. Balke. (NME).- Paratypes: 4 females (same data; NME, CHG).

DIAGNOSIS: From *P. guttalis* with a pair of round yellow elytral spots near base and with lance-shaped mesosternal tablet too only to separate with certainty by the male genitalia.

DESCRIPTION: Length 2.3-2.8 mm.- Surface piceous-black, shining, without reticulate microsculpture, with red head and a pair of round yellow elytral spots near base. Head rather strongly, moderately densely punctate, red, except hind margin. Apical segment of maxillary palpi not distinctly longer than penultimate. Ultimate segment of antennal club pale. Pronotum punctate like head, black, margins and angles reddish. Elytra black, shining, without reticulate microsculpture, broadly oval, rather convex, margin hardly visible from below; punctural series shallowly impressed from

base to apex. A single pair of round yellow spots near base covering interstices 5-7.- Mesosternal lamina elongate ca. 6 x as long as wide, parallel-sided, shortly pointed both anteriorly and posteriorly. Aedeagus with parallel-sided, apex of median lobe; parameres broad, strongly narrowed basally at inner face, apices hooked inwards. (Fig. 4).

ETYMOLOGY: From Latin: bi = two; signatus = marked.

4. *Platycyon bistriguttatus* sp. n.

LOCUS TYPICUS: New Guinea (Huon Golf).

Holotypus (male): 2.5 x 2.0 mm.- N. Guinea, Biró 1899/ Sattelberg Huon Golf. (TMB).- Paratypes: 1 male, 4 females (same data; TMB, CHG); 1 male: New Guinea /NE/ Wau, Mc Adam Park, 29. VIII.1968/No. NG-W-B. 38/ leg. Dr. J. Balogh. (TMB).

DIAGNOSIS: This species is sufficiently characterized by the form and position of the three pairs of round yellow spots on elytra, besides the male genitalia.

DESCRIPTION: Length 2.4-3.0 mm.- Surface shining black without reticulate microsculpture; elytra with 3 pairs of large yellow spots, 2 in anterior half, 1 in posterior half.

Head rather coarsely densely punctate, shining black with dark reddish clypeus. Apical segment of maxillary palpi not distinctly longer than penultimate. Antennal club dark, apical segment nearly white. Pronotum punctate like head, shining, piceous-black, sublaterally narrowly yellowish. Elytra with two pairs of round yellow spots in anterior half, covering interstices 5-7/2-3 and one pair of transverse spots in apical half, covering interstices 2-7. Mesosternal elevation elongate, ca. 5 x as long as wide, parallel-sided, longly narrowed anteriorly, shortly narrowed posteriorly, indistinctly punctate dorsally. Aedeagus with narrow median lobe and broad convex parameres. (Fig. 9).

ETYMOLOGY: From Latin: bis = twice, tri = three, guttatus = spotted.

5. *Platycyon guttalis* sp. n.

LOCUS TYPICUS: New Guinea (Kiunga).

Holotypus (male): 2.5 x 1.8 mm. New Guinea /SE/ Kiunga, 1.VIII.1969/ No. NGK-R.1./leg. Dr. J. Balogh. (TMB).

DIAGNOSIS: Very close to *P. bisignatus* and *P. biguttatus* sharing only one pair of round yellow elytral spots near base. Separated from *P. bisignatus* by the shape of mesosternal lamina, more lance-shaped in *P. guttalis*, parallel-sided in *P. bisignatus*. From *P. biguttatus* it is separated only by the shape of the parameres.

DESCRIPTION: Length 2.5 mm.- Surface black, shining, without reticulate microsculpture.

Head rufotestaceous, elytra with a single pair of yellow spots near base.- Head moderately strongly, moderately densely punctate, shining, rufotestaceous, except hind margin. Apical segment of maxillary palpi not distinctly longer than penultimate. Apical segment of antennal club nearly white. Pronotum punctate like head, black, shining, at least laterally dark reddish. Elytra piceous-black, shining with a pair of round yellow spots near base covering interstices 5-7. Elytral margin hardly visi-

ble from below. Punctural series distinctly striiform in posterior half. Mesosternal lamina elongate lance-shaped ca. 6 x as long as wide, widest at middle. equally narrowed both anteriorly and posteriorly. Aedeagus with parameres sinuate at outer margin in apical half. (Fig. 12).

ETYMOLOGY: From Latin: gutta = drop.

6. *Platycyon guttifer* sp. n.

LOCUS TYPICUS: New Guinea (Wau).

Holotypus (male): 3.0 x 1.9 mm. New Guinea /NE/ Wau, Mt. Kaindi. 27.VIII.1968/ No. NG-W-B. 25./ leg. J. Balogh. (TMB).- Paratypes: 1 female: New Guinea /NE/ Wau, Golden Ridge, 3.IX.1969/ No. NG-W-B 64./ leg. J. Balogh. (CHG).

DIAGNOSIS: By the combination of a pair of round yellow spots and two pairs of transverse zigzag spots on elytra not to confuse with *P. bistriguttatus*, which has two pairs of round spots and one pair of transverse elytral spots. The aedeagi of these two species are quite distinct.

DESCRIPTION: Length 2.8-3.0 mm.- Shortly oval, rather convex, surface piceous, shining, without reticulate microsculpture. Elytra with 3 pairs of yellow spots. Head coarsely and densely punctate, shining; clypeus dark red. Apical segment of antennal club pale; apical segment of maxillary palpi not distinctly longer than penultimate. Pronotum punctate like head, piceous with broadly lightened sides. Elytra rather convex, narrowed apically; margins hardly visible from below; elytral series rather strong and less impressed in basal half, less strong and more impressed in apical half; piceous with a pair of round yellow spots near base covering interstices 6-7, two pairs of transverse zigzag spots behind mid covering interstices 2-6. Mesosternal tablet elongate, ca. 5 x as long as wide, parallel-sided, shortly narrowed behind and before, strongly punctate dorsally. Aedeagus elongate; median lobe slender, abruptly narrowed subapically; parameres digitate, waisted at outer margin. (Fig. 5).

ETYMOLOGY: From Latin: gutta = drop; ferre = bear.

7. *Platycyon latior* sp. n.

LOCUS TYPICUS: Irian Jaya.

Holotypus (male): 2.2 x 1.4 mm.- Indonesia, Irian Jaya, Nabire area, road Nabire-Illaga, km 62, 03°30'936" S/ 135°41'945" E, 250 m NN, X.1997, LEK, leg. M. Balke. (NME).

DIAGNOSIS: Very close to *P. minor*, distinguish from that species by the black clypeus and incompletely yellow antennal club, also by the different aedeagus.

DESCRIPTION: Length 2.2 mm.- Surface entirely black, shining, without reticulate microsculpture.

Head rather strongly and densely punctate; apical segment of maxillary palpi not distinctly longer than penultimate; apical segment of antennal club paler than the preceding segments, clypeus piceous, at least slightly red at anterior margin. Pronotum punctate like head, fore angles yellow. Elytra oval, margins not visible from below; punctural series clearly impressed also in basal third. Mesosternal elevation very

narrow elongate, ca. 5 x as long as wide, broadest at middle, evenly narrowed both anteriorly and posteriorly. Aedeagus with shorter median lobe and characteristic broad tooth on inner face of parameres. (Fig. 2).

ETYMOLOGY: From Latin: *latior* = broader.

8. *Platycyon minor* sp. n.

LOCUS TYPICUS: Irian Jaya.

Holotypus (male): 2.1x1.5 mm.- Indonesia, Irian Jaya, Nabire area, road Nabire-Illaga, km 62, 03°30'936" S/ 135°41'945" E, 250 m NN, X.1997, LEK, leg. M. Balke. (NME).- Paratypes: 1 male, 5 females (same data, NME, CHG).

DIAGNOSIS: Very close to *P. latior*, to distinguish from this by the colour of clypeus and antennal club, besides the different male genitalia.

DESCRIPTION: Length 2.1-2.8 mm.- Surface piceous with yellow fore angles of pronotum and red clypeus, the latter with narrow dark midline, shining, without reticulate microsculpture.

Head moderately finely, moderately densely punctate; apical segment of maxillary palpi not distinctly longer than penultimate; antennal club entirely yellow. Pronotum punctate like head; fore angles yellow. Elytra oval, lateral margins not seen from below, punctural series clearly impressed also in basal third. Mesosternal tablet elongate lance-shaped, ca. 8 x as long as wide, broadest in anterior third, evenly narrowed and sharply pointed both anteriorly and posteriorly. Aedeagus with long knife-shaped parameres and short parallel-sided median lobe. (Fig. 3).

ETYMOLOGY: From Latin: *minor* = smaller.

9. *Platycyon nabirensis* sp. n.

LOCUS TYPICUS: Irian Jaya.

Holotypus (male): 3.0x2.0 mm. Indonesia, Irian Jaya, Nabire area, road Nabire-Illaga, km 54, 03°29'517" S/ 135°43'9132 E, 750 m NN, X.1997, LEK, leg. M. Balke. (NME).

DIAGNOSIS: Females are difficult to separate from *P. biroi*, though the apical segment of maxillary palpi is not distinctly longer than penultimate in *P. nabirensis*. In *P. reticulatus* the elytral margin is distinctly visible from below.

DESCRIPTION: Length 3.0 mm.- Surface piceous-black, clypeus reddish; elytra entirely microsculptured, without yellow spots.

Head moderately finely and very densely punctate, palpi and antennae entirely yellow; apical segment of maxillary palpi not distinctly longer than penultimate. Pronotum black, at least narrowly reddish laterally; punctation dense and of different size. Elytra entirely covered by reticulate microsculpture, though less evident in anterior half, apically slightly narrowed; lateral margin not visible from below. Mesosternal tablet elongate lance-shaped, widest at mid, ca. 5 x as long as wide, more rounded narrowed and pointed anteriorly, more evenly narrowed, not pointed posteriorly; plane, densely punctate, finely margined. Aedeagus parallel-sided; median lobe much narrower than parameres. (Fig. 8).

ETYMOLOGY: Derived from the type locality.

10. *Platycyon nigrifrons* sp. n.

LOCUS TYPICUS: Irian Jaya.

Holotypus (male): 2.2 x 1.4 mm. Indonesia, Irian Jaya, Nabire area, road Nabire-Illaga, km 54, 03°29'517" S/ 135°43'913" E, 750 m NN, X.1997, LEK, leg. M. Balke. (NME).

DIAGNOSIS: Between the entirely black species without reticulate microsculpture this species is to identify by the elytral series not impressed in basal and apical third.

DESCRIPTION: Length 2.2 mm.- Surface black, except yellow fore angles of pronotum; elytra shining, without distinct reticulate microsculpture.

Head finely, distantly punctate; antennal club dark, ultimate segment yellowish; apical segment of maxillary palpi not distinctly longer than penultimate. Pronotum rather finely distantly punctate, fore angles yellow. Elytra oval, lateral margins not visible from below; punctural series not impressed in basal and apical third. Mesosternal tablet very narrow and elongate, ca. 8 x as long as wide, widest before mid, narrowed and pointed both anteriorly and posteriorly, bulged, nearly unpunctate. Aedeagus with characteristically divergent pen-shaped and acutely pointed parameres, widely surpassing the narrow median lobe. (Fig. 1).

ETYMOLOGY: From Latin: niger = black; frons = face.

11. *Platycyon opacipennis* sp. n.

LOCUS TYPICUS: New Guinea NE.

Holotypus (female): 2.5 x 1.6 mm. New Guinea /NE/ Mt. Wilhelm, 4.-9.VIII.1969 / No. NGMt-B.34./ leg. Dr. J. Balogh. (TMB).- Paratypes: 2 females (same data, TMB, CHG).

DIAGNOSIS: This particular species is easily to recognize in both sexes by the entirely ferruginous colour with yellow elytral base, lateral interstice and apex in combination with dull elytra and shining pronotum.

DESCRIPTION: Length 2.5-2.7 mm.- Surface and underside ferruginous to castaneous with brightened base, sides and apex of elytra; the latter entirely reticulate microsculptured, dull.

Head rather strongly densely punctate, shining; antennal club darkened; apical segment of maxillary palpi distinctly longer than penultimate. Pronotum punctate like head. Elytra short oval, strongly convex, narrowed in apical third; punctural striae strong, distinctly impressed apically, interstices there somewhat convex. Mesosternal tablet elongate pentagonal, ca. 6 x as long as wide, pointed anteriorly, rugosely sculptured.

ETYMOLOGY: From Latin: opacus = dull; penna = elytron.

12. *Platycyon quadriguttatus* sp. n.

LOCUS TYPICUS: New Guinea SE.

Holotypus (male): 3.0 x 2.0 mm. New Guinea /SE/ Port Moresby, Rigo, 18.VIII.1968 / No. NG-P-R.2./ leg. Dr. I. Loksa. (TMB).- Paratypes: 1 female: 3.4 mm. New Guinea /SE/ Kiunga, 23.VII.-2.VIII.1969 / No. NGK-B.16./ leg. Dr. J. Balogh. (CHG).

DIAGNOSIS: Between the complex of species around *P. guttatus* to separate by the elytral spots; in this case by one pair of round yellow spots near base and one pair of a little smaller round spots near apex.

DESCRIPTION: Length 3.0-3.5 mm.- Surface piceous-black with reddish head and two pairs of round yellow spots on elytra; shining, without reticulate microsculpture. Head coarsely densely punctate, red, except hind margin. Apical segment of maxillary palpi not distinctly longer than penultimate; antennal club dark with pale ultimate segment. Pronotum distinctly finer, less densely punctate than head, entirely piceous. Elytra broadly oval, rather convex, margin not visible from below; punctural series strong, slightly impressed from base to apex; colour black with two pairs of round yellow spots, the first near base covering interstices 5-7, the second in apical third smaller, covering interstices 3-4. Mesosternal tablet elongate pentagonal, ca. 5 x as long as wide, evenly narrowed in anterior half, coarsely shallowly punctate dorsally.

ETYMOLOGY: From Latin: quattuor = four; gutta = drop.

13. *Platycyon rufoguttatus* sp. n.

LOCUS TYPICUS: New Guinea (Kiunga).

Holotypus (male): 2.9 x 1.8 mm. New Guinea /SE/ Kiunga, 1.VIII.1969/ No. NGK-R.1/ leg. Dr. J. Balogh. (TMB).- One aberrant female from the same locality (3.4 mm) with an additional spot on right elytron behind mid probably belonging to *P. rufoguttatus* it is not included in the paratype series. (TMB).

DIAGNOSIS: Within the complex of species with only one pair of elytral spots near base this species is to distinguish from others at first glance by the more reddish colour and the less sharply delimited margins of the spots. Certainty is to obtain only by examination of the male genitalia.

DESCRIPTION: Length 2.9 mm.- Surface piceous-black with red head and a pair of reddish round spots near base of elytra; shining, without reticulate microsculpture. Head rather coarsely densely punctate, shining, red, except hind margin. Apical segment of maxillary palpi not distinctly longer than penultimate. Antennal club ferruginous, ultimate segment pale. Pronotum more distantly punctate than head. Elytra black with a pair of less delimited reddish spots near base, covering interstices 6-7, the 11th interstice reddish. Punctural series shallowly impressed from base to apex. Mesosternal lamina elongate, ca. 5 x as long as wide, broadest in hind third, shortly rounded posteriorly, evenly attenuate anteriorly. Aedeagus with parameres distinctly longer than basal piece, outer margin waisted, apices rounded bent inwards. (Fig. 6).

ETYMOLOGY: From Latin: rufus = red; gutta = drop.

14. *Platycyon striatoguttatus* sp. n.

LOCUS TYPICUS: New Guinea (Wau).

Holotypus (female): 3.4x2.0 mm. New Guinea /NE/ Wau, Mt. Kaindi, 2300 m, 25.VIII.1968/ No. NG-W-B. 21/ leg. Dr. J. Balogh (TMB).

DIAGNOSIS: Easily to recognize even without a male by the characteristic colour pattern.

The New Guinean species of the genus *Platycyon* Hansen, 1999

DESCRIPTION: Length 3.4 mm.- Rufotestaceous; elytra with a common piceous discal patch on anterior half and a V-shaped figure in apical half; elytral intestices convex, more in apical half, here and there with traces of microsculpture. Head very shallowly punctate; clypeus pale yellow, postfrons rufotestaceous. Apical segment of maxillary palpi not longer than penultimate. Antennal club striking elongate, rufotestaceous, apical segment paler. Pronotum punctate like head. Mesosternal tablet elongate lance-shaped, ca. 4 x as long as wide, broadest behind middle, slightly bulging.

ETYMOLOGY: From Latin: striatus = striate; gutta = drop.

15. *Platycyon sulcatus* sp. n.

LOCUS TYPICUS: Irian Jaya.

Holotypus (male): 3.0 x 1.8 mm. Indonesia, Irian Jaya, Nabire area, road Nabire-Illage, km 62, 03°30'936" S/ 135°41'945" E, 250 m NN, X.1997, LEK, leg. M. Balke. (NME).- Paratypes: 2 males (same data, NME, CHG).

DIAGNOSIS: Close to *P. striatus*, both with finely striate elytral series and piceous surface without spots, but with extremely fine lunulate punctation on pronotum, with apical segment of maxillary palpi distinctly longer than penultimate. The aedeagi of both species are quite distinct.

DESCRIPTION: Length 2.8-3.0 mm.- Surface shining piceous-black with clypeus and sides of pronotum yellowish, without reticulate microsculpture or spots. Head extremely finely, moderately densely punctate, piceous; clypeus reddish with fine dark midline. Apical segment of maxillary palpi not distinctly longer than penultimate; ultimate segment of antennal club pale. Pronotum extremely finely lunulate punctate, black, sides and fore angles yellowish.- Elytra finely striate less impressed basally, strongly impressed towards apex; interstices very finely, moderately densely punctate; elytral margin not seen from below, narrowly yellow before apex. Mesosternal tablet very narrow, ca. 6 x as long as wide, widest anteriorly, evenly attenuated in posterior half. Aedeagus characteristic with parameres not surpassing mid of median lobe; the latter attenuated from base to apex. (Fig. 10).

ETYMOLOGY: From Latin: sulcatus = furrowed.

ADDITIONAL MATERIAL EXAMINED

Platycyon reticulatus Hansen, 1999

1 male, 1 female : Indonesia, Irian Jaya, distr. Nabire, Kali Bobo, 500 m NN, IV.1998, leg. M. Balke & Konyerah. (NME); 1 male, 3 females: Indonesia, Irian Jaya, distr. Fak Fak, Yamur lake area, 100 m NN, IV. 1998, leg. M. Balke. (NMW, CHG).

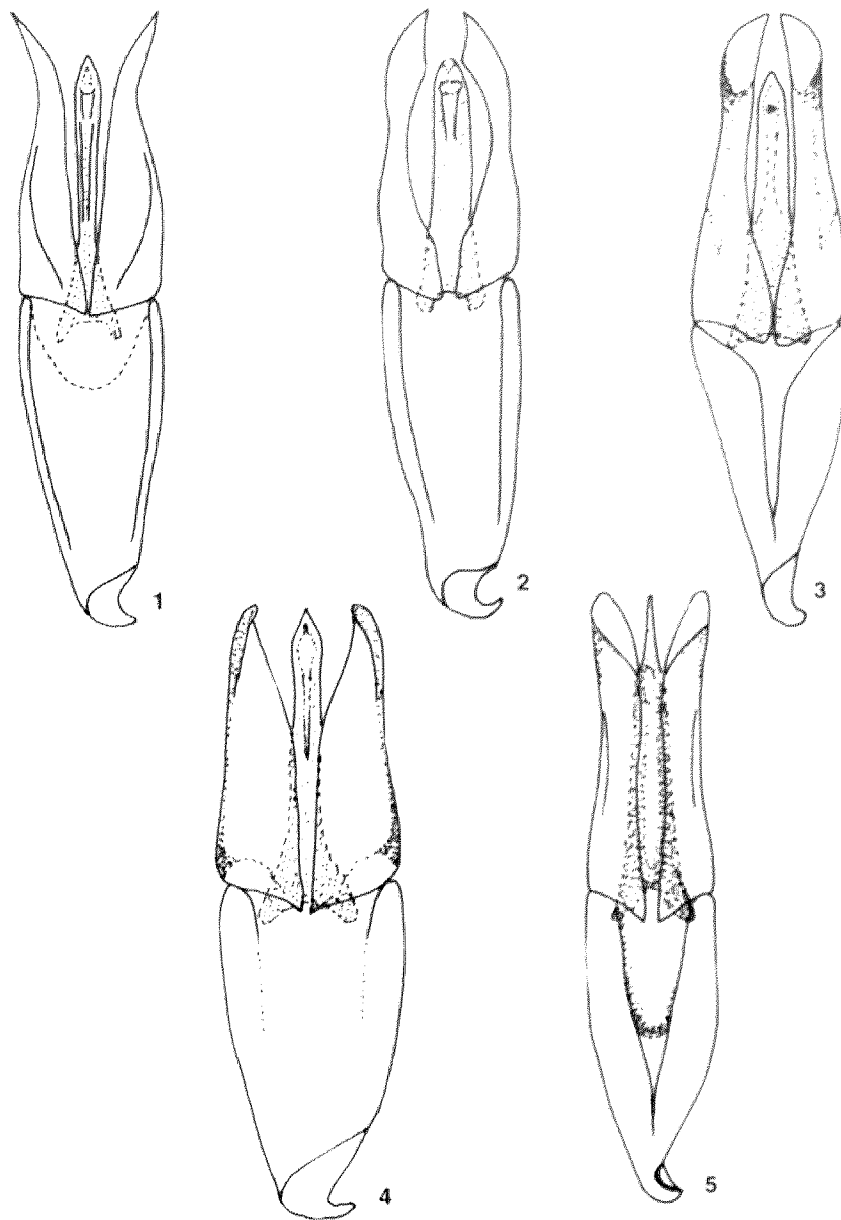
REFERENCE

Hansen, M. (1999): Fifteen new genera of Hydrophilidae (Coleoptera), with remarks on the generic classification of the family.- Ent. scand. 30: 121-172. Copenhagen.

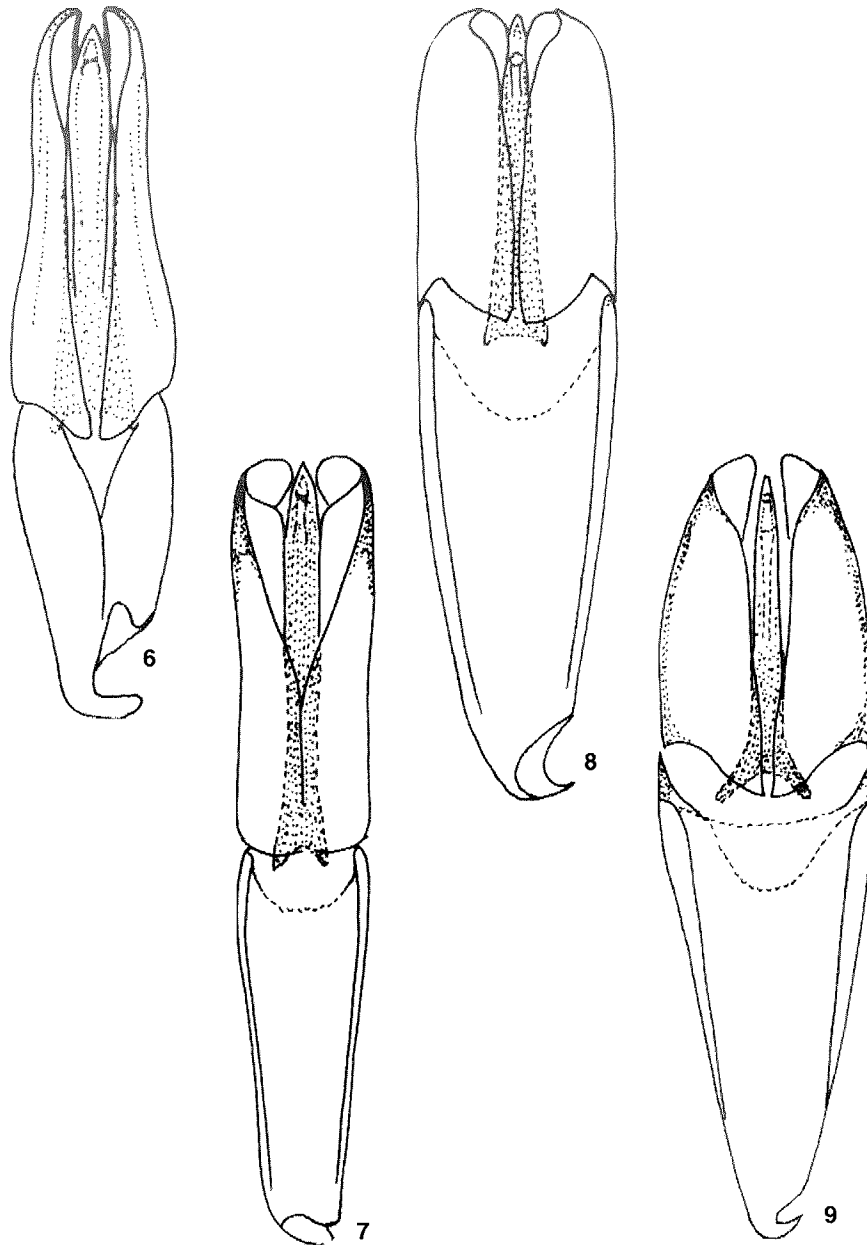
AUTHOR'S ADDRESS

PD Dr. Franz Hebauer, Ulrichsberg 7, D-94539 Grafing

FRANZ HEBAUER

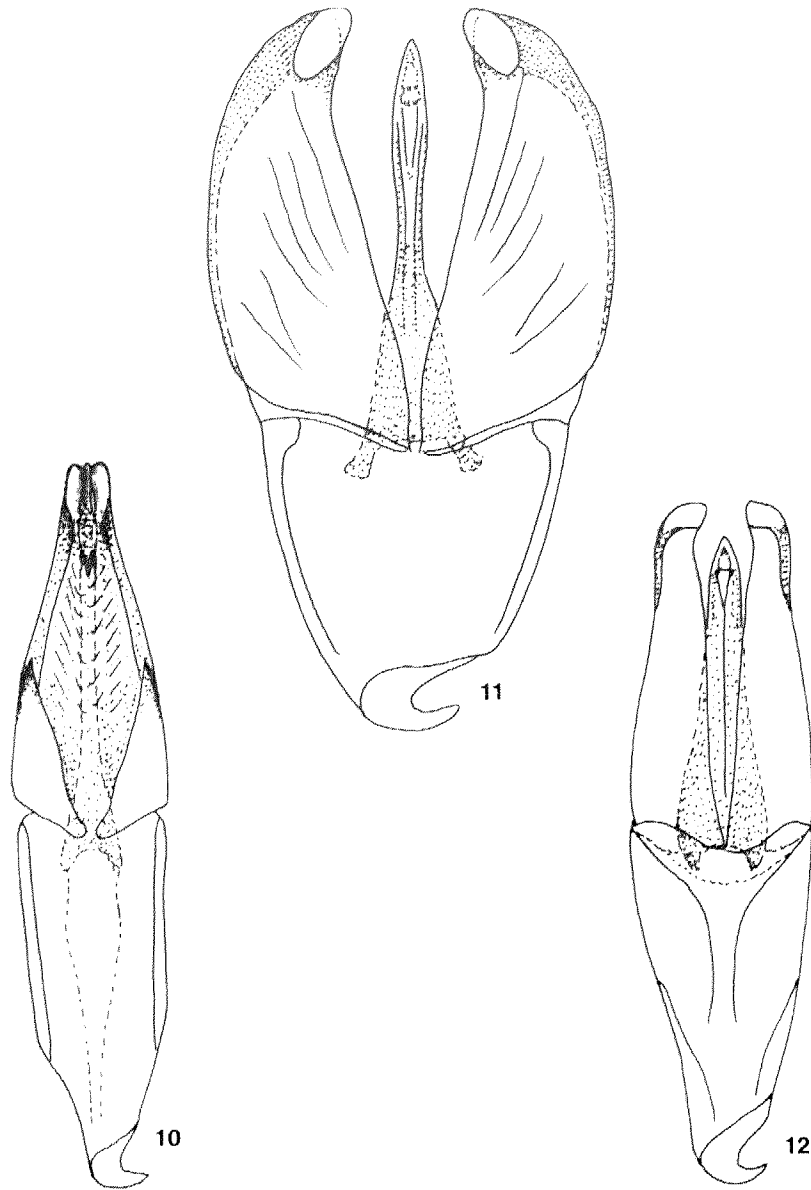


Figs. 1 - 5: *Platycyon*, aedeagus, dorsal view:
1. *P. nigrifrons* sp. n., (0.85 mm); 2. *P. latior* sp. n., (0.85 mm);
3. *P. minor* sp. n., (0.85 mm); 4. *P. bisignatus* sp. n., (0.85 mm);
5. *P. guttifer* sp. n., (1.15 mm);



Figs. 6 - 9: *Platycyon*, aedeagus, dorsal view:
6. *P. rufoguttatus* sp. n., (1.30 mm); 7. *P. biroi* sp. n., aedeagus, (1.50 mm);
8. *P. nabirensis* sp. n., (1.45 mm); 9. *P. bistriguttatus* sp. n., (1.10 mm);

FRANZ HEBAUER



Figs. 10 - 12: *Platycyon*, aedeagus, dorsal view:
10. *P. sulcatus* sp. n., (1.00 mm); 11. *P. biguttatus* sp. n., (1.00 mm);
12. *P. guttalis* sp. n., (0.95 mm).