

10 copy only!

Spangler
TT 78-59145
(129)

From: Bulletin Annales Societe Entomologique Belgique

Vol. 76, 1936, pp.425-438.

By

A. D'Orchymont

NOTES ON SOME SPECIES OF THE GENUS LACCOBIUS ERICHSON

(Bulletin Annales Societe Entomologique Belgique)

Translated from French

Translated for the Smithsonian Institution, and the National
Science Foundation, Washington, D. C. by the AI Ahrum Center
for Scientific Translations.

1980

Notes on Some Species of the Genus *Laccobius* Erichson

By

A. D'Orchymont

This second series of notes concerning species of the genus *Laccobius* is based on the study of some typical specimens of KIESENWETTER, KUWERT, ROTTENBERG and J. SAHLBERG, kindly borrowed by MR. W. HORN from Berlin, by KULZER from Munich, by LINDBERG from Helsinki (Finland), by LINNANIEMI from Turku (Finland) and by R. OBERTHUR from Rennes.

I am grateful for their kindness.

L. (S. str.) Revelièrei, Perris, 1864 emend. De Marseul, 1871.

L. Revelièrei Perris, 1864 (Corsica).

L. Leucaspis Kiesenwetter, 1870, ex.p. (Andalusia, Algeria).

L. Elongatus Tournier, 1879 (non L., + *Elongatus* Scudder, 1878) (Tangier).

This small species, obtained from Corsica, is characterized by its Labrum, head and pronotum, Its mesonotum is clearly bounded by the fine and scattered punctuations with its metallic red coloration on the labrum and the head (except the frontocular yellow spot in the anteroocular part). In the middle of the vertex, there is a dark spot starting anteriorly or near to this border, large along the distance separating the eyes and narrowing posteriorly in a triangular shape with a rounded tip, sometimes oval in shape not larger anteriorly than posteriorly or sometimes quadrate in shape.

The ♂ labrum has no spicule. The elytra has numerous primary and secondary striations, composed of points everywhere equal in strength, but irregular striations, being even unmarked posteriorly.

Independably of the anterior enlarged tarsi, at the base, in case of ♂, as it is in all *Laccobius*, *Revelièrei* shows a secondary sexual dimorphism which is typical and affects the ♀. This characteristic, which has not been recorded before, is found in case of the Corsica and Sardinia ♀♀ as well as

in those of North Africa. This dimorphism consists of elongation of the trochanters of the ♀ posterior legs which terminates in a long end instead of being short and rounded at the end as in the ♂ and in both sexes of Laccobius. The trochanter is slightly curved anteriorly to follow the direction of the posterior edge of the femur (Fig. 1) and is externally fringed with some short hairs.

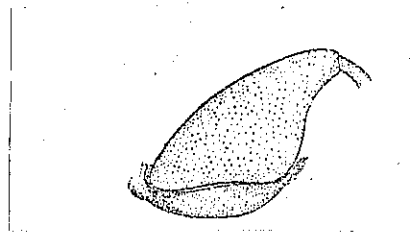


Fig. 1: Left hind or posterior Femur and trochanter—see below in L. Reveleierei PERRIS, ♀ (Oristano - Sardinia). X 50

The scutum of PERRIS's specimen has been described as being red metallic in color. But I saw specimens from Corsica and Sardinia where this scutum was completely testaceous and dark all around. So that, in the study, the coloration of the scutellum is not important, more frequently this portion of the body seems in the same insect red or light depending on the reflection of the light. But the specimens with very light scutum have been called leucaspis KIESENWETTER variety Reveleierei (1), but we shall notice later on that KIESENWETTER gives the same name to two different forms and that the name leucaspis must be given to specimens belonging to the East Mediterranean and somewhere near Djibouti whose ♀ possess round posterior trochanter instead of being long. This particular classification of only one sex makes it possible to describe and distinguish sharply these two species. In the West Mediterranean regions (Corsica, Sardinia, Morocco), the Hoggar and even the east English Africa, only the Reveleierei have been collected.

A male from Sardinia compared to one from Morocco has not been distinguished by magnification. The two organs, long in shape, slightly longer in the first ♂, are essentially similar, but of a slightly unequal size, as the 2 other species to which they belong (2). The paramers are gradually thin, becoming finally very narrow, and rounded at the end. They slightly extend from the median lobe which is not very large.

L. (S. Str.) leucaspis KIESENWETTER, 1870 (3), ex. p.

-
- 1) See de Rey, Ann. Soc. Linn. Lyon, XXXI, (1884) 1885, p. 294, note
 - 2) The internal pouch is clearly protruded in case of Sardinian specimen (Oristano), it is not protruded in the other specimen.
 - 3) Berliner Entom. Zeitschr., XIV, Beiheft, p. 68.

This name has been given by the author to the specimens collected in "Andalusia" by G. DIECK, in "Algeria" by KRAATZ and in Egypt by SCHAUM.

The G. DIECK's collection has deteriorated¹⁾. But this entomologist gave a description of the travel in Spain at the end of 1868 and at the beginning of 1869²⁾. If in Andalusia he did not mention any collection of Laccobius, we are sure, during our studies of the different localities of this region, visited by him, that the different specimens given for study to KIESENWETTER, must be from the seaborder near Gibraltar strait (Malaga, even Algeciras where the fauna is similar to that of Tangier, may be, although with less reality, Puerta Santa Maria or Sevilla). At Cordoba, Grenada and at Loja, inside the country, DIECK's activity was nearly reduced to zero by the disease. In 1935, I could not discover anything similar in the region of a more higher altitude³⁾ which comprised these three towns. The Spanish materials, which were other sources and which helped me did not include the species. I believe that the specimens from Andalusia were Revelièrei with yellow scutum similar to those of Morocco notably at Tangier. DIECK indicated the similarity of the entomological fauna of the two channel borders, the African and the Spanish, and he explained this by the frequent transport of the floating Moroccan elements, pushed towards Europe by the strong sea current going from the Atlantic to the Mediterranean and by the South winds blowing sometimes in storms. This action occurs only in one direction, not from Spain towards Africa.

From Algeria, I could'nt observe specimens. Those collected by KRAATZ and seen by KIESENWETTER were not found in Berlin-Dahlem Museum where KRAATZ collection was found. But instead a certain number of specimens was seen in Morocco (Tangier, Meknès, Sous town, Agadir, Massa Oued) and in Hoggar (Idelès), whose ♀♀ had the trochanters of the hind legs elongated as those of Corsica and Sardinia. Thus they also belonged to Revelièrei.

The KIESENWETTER, collection > C1. MÜLLER at Munich Museum, comprises 3 specimens belonging to leucaspis. One labelled "Egypt", another "KIESENWETTER", the last without a label. These are 3 ♀♀ whose hind trochanters are not elongated but rounded. They are different from the western Mediterranean species

1) W. HORN, Ueber entomologische Sammlungen I, in Ent. Beihefte aus Berlin-Dahlem II. 1935, p. 56.

2) Berliner, Entom. Zeitscher., XIV, 1870, from page 145.

3) Cordoba; 122 m; Loja: 475 m.; Grénada: 689 m.

(Revelièrei). I think that these 3 specimens originate from Egypt - this was confirmed by M. KULZER, by its identical preparation, the form of median spot of the pronotum, the coloration of the rest of the body etc... They are 3 paratypes.

Finally, at the Berlin-Dahlem Museum, there is only one ♂ labelled as follows: "Laccobius n.sp. Aegypt (KRTZ) SCHAUM collection "|| "leucaspis" || "Type" || "HEYDEN coll. " || "Typus" || "Lacc. Revelièri var. leucaspis KIESW". This specimen belongs to the same species as those of Munich; its size is 2.3 x 1.2 mm. Certainly, it was the same one described by KIESENWETTER (p. 69: "von KRAATZ aus Aegypten, hier von SCHAUM gesammelt"). This is the specimen which must be considered as leucaspis holotype, with more reasons that the typical specimens from Andalusia and Algeria no more seem to exist and they surely belong to Revelièrei. This name leucaspis must be reserved to the form from the East Mediterranean regions whose ♀ hind trochanters are round at the end, not elongated (Fig. 2) and are well known to me from Tiberias Lake, Saudi-Arabia, and Djibouti, Being so limited, this form has always the scutum light in color with regard to the red mid-spot of the pronotum, it is oval, longer than broader, with tendency to be teared backward until it forms 2 minute geminated spots, and more or less united in front with a small brownish dash between them in the middle. Sometimes, this spot disappears completely. Like in case of Revelièrei, the end of the labrum is without bristles in the ♂, and that of the head, pronotum and the scutum is finely and densely bounded. The sculpture of the elytra is very similar to that of the same species composed of numerous primary and secondary striations whose spines are five and of the same strength. The hind femurs are all enlarged against the trochanters.

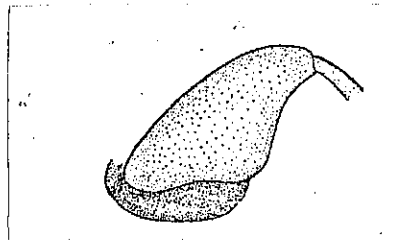


Fig.2. Left posterior (hind) femur and trochanter-see below in L. leucaspis KIESENWETTER, ♀ (Nefich-Egypte) x 50.

Belongs also to leucaspis KIESENWETTER, S., Str. is the species described by J. SAHLBERG under the name of argillaceus (from Beirut, - not those from Tschu river in Turkestan -, 2 ♂♂ from Turku Museum, 1 ♂ from Helsinki Museum) and minimus (Cairo, 1 ♂♀ in KNISCH collection)(1) ♀ from Saudi Arabia was also classified by SHARP as praecipuus (see, further).

1) J. SAHLBERG, Ofv. Finsk. Vet. Soc. Förh., LV, A, No. 19, 1912-1913 p. 50. These 5 specimens were not seen by me.

Neither *Revelièrei* nor *leucaspis* have been mentioned from Baléares by MORAGUES, TENENBAUM, BREIT and VILLARUBA Y ESPANOL, or from the South of France by SAINTE CLAIRE DEVILLE.

The ♂♂ of these 2 species can be distinguished from one another by their geographical origin and by the collected females at the same time and at the same place. The magnitude is also practically the same in PERRIS and KIESENWETTER species. If the Egyptian *leucaspis* seems larger and longer than the *Revelièrei* of Corsica and Sardinia, many specimens from Morocco belonging to *Revelièrei* are not also separated from this point of view from these *leucaspis*. The punctuations of the head and pronotum which are usually very fine in the specimens from the 2 Mediterranean islands as already reported, are variable in those of Africa, i.e. sometimes more marked and deeper, especially in some *leucaspis*.

According to the morphological importance and the constant character presented by the ♀ hind trochanters and especially the zones of geographical distribution, which are completely separated till today, eastern for *leucaspis* and more western for *Revelièrei*, I am to consider with some reservation according to what follows these 2 specimens as distinct species.

The taxonomic interest is not the one which is attached to the finding of a special character, in particular to the females in this small group of insects. In order to show it, I am obliged to present some developments which I have borrowed from KOLBE (1) on the secondary sexual dimorphism and the mutative specimens.

The secondary sexual characters are those which appear in the different parts of the body; not in direct relation with the reproduction or which do not help directly in the copulation. When one of the sexes is dimorphe, i.e. when it presents a specimen without a secondary sexual character, similar to the other sex and other specimen, mixed with it, showing such characters, we had a case of the secondary sexual dimorphism. According to KOLBE, when no transition exists or does not seem to exist between the true specimen and that, from which the present character is derived, this latter owes its

1) Herm. KOLBE, Ueber Mutationen und Aberrationen deutscher und auswärtiger Coleopteren und anderer Insekten, in Deutsche Entom. Zeitschr., 1920, pp. 386-408.

W. HORN (Entom. Blätter, 28, 1932, p. 67) did not give a concise definition as that of KOLBE on the secondary sexual characters. For him, even the characters presented by the external genitalia - which were not issued from the germinative plasma but belonged to the soma - were secondary and not primary as confirmed by KOLBE.

appearance to a mutation. This one may be old and an ordinary start with the female. It is later, when it is dominant that this mutant ♀ succeeds sometimes in influencing its male progeny, and if this latter gains new characters, fixed by the heredity, which do not exist in the primitive male, we are in the presence of a new species resulting from the mutation. Sometimes it happens, during the first phase that the primitive form, non-mutant, becomes extinct and the secondary dimorphic specimen, having dominated the other, succeeds in replacing it completely. In this case, it is a pure secondary sexual dimorphism.

It seems that what has been presented forward is the case with which we are concerned. L. leucaspis is the primitive form, without dimorphism. L. Revelièrei, whose ♀ is affected by a pure secondary sexual dimorphism is a secondary progressive form, originating from leucaspis or from analogous species. No transition has been established between the ♀ hind trochanters which are rounded at the end of the latter and elongated in the case of the Revelièrei. It seems that we have to refer this particular differentiation to an old mutation, suddenly taking place in the normal primitive females and finally dominated by this new form. The constancy of the discovered ♀ character and of the zones of distribution, indeed entirely separated and occupied on the one hand by leucaspis, and on the other by Revelièrei, makes it necessary to verify for the sake of accurate knowledge, at least temporary, the specific validity of the names given by KIESENWETTER and PERRIS. If it happened, after some new researches and studies of materials from other sources, that we had to consider one of the 2 forms as a sub-species of the other, unfortunately it would be the name of the derived form Revelièrei, which must be in favor of R.I.N.Z.

L. (S. Str.) minimus KUWERT, 1890

This species is found in the author's table (pp. 76 and 84) as originating from Algeria and possessing a metallic shiny mesonotum. In page 316 of the same work, KUWERT gives it a grey-yellow mesonotum and Egypt as its country. The KUWERT's collection comprises 2 minimus both labelled "Algiers", the first, nominated by me as holotype having a labelled "minimus" KUW. Afr. bor". Both of them, the holotype, (ventrally stuck) and the paratype (dorsally stuck) are females and measure 1.95 x 1.08 mm and 1.8 x 1.05 mm respectively. Two females from Nefich (Egypt) from KNISCH collection, ascertained that minimus, are identical to the two typical specimens. Till now, I have not seen a male.

These 4 ♀♀ are directly identified from Revelièrei, which possess the head, the pronotum and mesonotum finely crossed between the punctuations, by the rounded hind trochanters at the end, being not elongated, the size is slightly smaller, the form is less elongated and more largely elliptical, the frontoocular spots are smaller and with less fixed boundaries, the dark and metallic or iridescent spot in the center of the pronotum is larger than longer, the elytra are run over as in gracilis by a longitudinal series of alternative dots which are thinner and less thick (the secondary) whereas in case of Revelièrei the two serial punctuations (the primary and the secondary) are ordinarily less unequal, with a tendency to be equal and mixed. These 4 minimus are to be contrasted to leucaspis S. Str., to which they approach by the general characters and by the ♀ non-elongated hind trochanters and which differ, by the same particularities that distinguish them from Revelièrei. As it appears, a lot of 4 subjects is insufficient for a so uniform coleoptera.

In case of minimus, the mesonotum is of a green dark and red color, the labrum is microscopically transversely striated, with some extremely fine points, the hind tibiae are very curved, regularly enlarged from the base to the extremity, while in the 2 comparable species, these tibiae are less curved, abruptly less straight, enlarged just internally before the extremity.

It has been previously shown that the 2 minimus specimens reported by J. SAHLBERG really belong to leucaspis.

L. (S. Str.) gracilis MOTSCHULSKY, 1855.

L. praecipuus KUWERT, 1890 (Saudi Arabia).

L. sublaevis J. SAHLBERG, 1900 (Turkestan) (cf. Bull. Ann. Soc. Ent. Belg. 73, 1933, p. 305).

L. orientalis KNISCH, 1924 (Kumaon) (cf. loc. cit. p. 305).

The KUWERT's collection has 2 specimens of L. praecipuus from Saudi Arabia, none from Egypt, though this country has been mentioned in the work in 1890.

1° One male recognized by KUWERT "praecipuus KUW., Saudi Arabia" which must be considered as holotype; size: 2.4 x 1.35 mm.

2° One female recognized by SHARP (after M.R. OBERTHUR): "praecipuus KUW., Saudi Arabia". This specimen, whose head, pronotum and scutellum are finally striated, the first one of metallic red except the big preocular spots, and the second in the middle is not praecipuus but well leucaspis KIESENWETTER (posterior or hind rounded trochanters, non-elongated).

The holotype is not spotted on the head and the pronotum, between the punctuation; there is no specula under the labrum, the prosternum is carinated or probably sharply tectiform. Conical mesosternal process, jointed at the extremity. Coloration from above similar to that of gracilis especially in case of specimens not so clear.

It is an abnormal individual and so the irregularities of the head's surface and of the pronotum and "die wulstige Verdickung um den Punkten der Flügeldecken". This microsculpture is irregular and gives the impression of the deposition of a polish which has been extended around each joint until it came in contact with the proximate deposition in a vertical direction; this microsculpture is thus accidental. Some traces have been noticed but less evident in two gracilis (one from Smyrne, the other from Eubée) which I have found among a lot of specimens belonging to this species. This accidental microsculpture is a result which is difficult to deduce. Really, the series of the elytra are alternatively thinner, as in case of gracilis, L. praecipuus has to be among the species of the first category of KUWERT, near singularis (1) and not among those of the second one.

I believe that praecipuus is an abnormal specimen of the mostly-distributed gracilis MOTSCHULSKY, known among those of Syria, Palestine and Sinai etc. After M.R. OBERTHUR, all these insects from Saudi Arabia certainly came from Millingen.

L. (S.Str.) argillaceus J. SAHLBERG, 1900.

Despite that the description shows many specimens, there is only one which is known: the holotype, which is in the Museum of Turku University (Finland). In Helsinki's Museum, there is one atypical ♂ from Beirut, but actually belongs to another species which will be mentioned later. The holotype is a female sex and labelled "Fl. TSCHU" || "J. SAHLB". || "Spec. typ." || "L. argillaceus J. SAHLB". Its size: 2.2 x 1.3mm. With this only specimen, without ♀♀ and especially without ♂♂, it is not sufficient to have an opinion on the specific validity of argillaceus. According to previous studies, it is, therefore, more convenient to summarize the observations which I have made when I compare it to a female from Pusa Bihar which looks like it. Extremity of the last segment of the maxillary palps is dark,

1) None of the singularis specimen has been found in KUWERT's collection: the label is found in the box, but without any trace of a pin. To me this "species" which presents on the elytra the same unusual microsculpture as praecipuus (so the name singularis) seems doubtful.

the labrum, except for the lateral margin being very broad, the disc of the head except the large frontocular spot (this touches the eyes, but is divided into 2 by the dark suture), 2 narrow striated bands in the middle of the pronotum and the mesonotum of dark green as in the studied female.

The base of the head is practically without striations as in case of the pronotum, but under high magnification, the latter shows a very slight trace. In case of Pusa, the striation is much more pronounced, the punctuation is more dense and more irregular, well defined on the margin of the pronotum, and the hind femurs seem less long, broader, just close to the trochanter. In argillaceus, the punctuation is thin and more distributed, slightly disappears on each side of the pronotum, except the systematic series. If the 2 specimens do not belong to the same species, which has not yet been established, they will be considered as very close to each other.

The elytra have a series of dots alternatively heavier (primary) and more delicate (secondary). The 3rd, 6th, and 8th intersuture (not the 2nd, 5th and 7th as reported by SAHLBERG) have some pores larger and deeper as well as the other intersutures situated backwards, and the lateral margin is largely without spotted series, broader than in case of the compared specimen.

Smooth and shiny labium, with some dispersed spots, neither very delicate nor very large. Prosternum tectiform, the apex forming a very fine edge. Mesosternum ending into a small projecting point or protruding tooth, the posterior edge of the development, backward to the tooth, bearing some hairs. Metasternum with a closely middle; slightly more smooth and without pubescence; but without edge or excavation. Hind trochanters rounded at the tip, the corresponding femurs not very large against them, much less broader than in case of leucaspis S. Str., approximately 2½ times longer than larger.

Close to this holotype, in the same museum, there are 2 ♂♂ identical to another specimen from Helsinki Museum, all 3 from "Beirut" || "J. SAHLB". || the first ♂ also labelled "L. var. argillaceus J. SAHLB". These 3 ♂♂ are leucaspis KIESENWETTER S. Str., showing the previously-described characters and identical to those of Tiberias Lake (1) and to those of Egypt recognized by SAHLBERG minimus.

L. rotundatus REGIMBART, from India, seems also in relation to argillaceus. A revision of the group to which belong these forms is not possible until we receive a supplement of specimens of the two sexes in a great number.

1) L. revelièri var. leucaspis KSW., Hydr. Philidae from the Lake of Tiberias by A. D'ORCHYMONT, in Journ. & Proc. Asiat. Soc. Beng., X, 1914, p. 358.

L. (S.Str.) eximius KUWERT, 1890.

Here is another form also difficult to describe and characterize better than the previous one, without specula under the ♂ labrum, but must be placed as the previous one in the gracilis group, due to the series of alternative strong and weak points on the elytra.

The KUWERT collection possesses 2 specimens from Saudi Arabia; 2 ♂♂ :

1° Labelled by the author as "eximius KUW. Saudi Arabia", to be considered as holotype, size: 2.8 x 1.6 mm (1).

2° Marked by the author de SHARP (after M.R. OBERTHUR):

"eximius etc." as previously.

There is no specimen from Egypt, although KUWERT mentioned this country in his work (pp. 71 and 314).

Having not seen something nearly identical to these specimens, I shall mention the particularities recognized after comparison with gracilis sardeus BAUDI which is very close.

L. eximius is bigger, less convex, larger, longer with the elytra apart protracted, together showing a pointed arch towards the extremity (more rounded here in sardeus), uniform reddish brown in color, slightly light in front of the eyes (without sharp limits) and on the lateral edges of the pronotum, the latter has no dark spot in the middle. The above sculpture is nearly the same in relation to position and strength with the secondary series scarcely visible, composed in all cases of points extremely slender. The primary series is slightly stamped. The "umbilicata series" of the 3rd, 6th, 8th, 10th and 11th interstriae is composed of points larger than those of the primary series. The scutellum is slightly longer than in sardeus, smooth and slightly depressed along the margins with some rare points on the central part. Maxillary palps, antennae and legs reddish as the back, the former is not dark at the tip. Prosternum is slightly tectiform in the middle, the mesosternal development is pointed forward. Hind trochanters are not prolonged, rounded. Hind tibia is normally curved, suddenly enlarged in the internal side towards the extremity.

L. (S.Str.) littoralis J. SAHLBERG, 1900.

1) After KUWERT 2.2 x 1.6 (p. 71) or 2 x 1.6 (p. 314).

This species, by its head, the non-iridescent middle of the pronotum and by the primary and secondary elytral punctuations, of equal strength, markedly deviates from the previous ones and seems near to minutus L. It is, however, less rounded, more prolonged, with the discal spot of the pronotum less near to the border and the punctuations of the elytra less regular, not very smooth, like a grease along the suture, resulting from slightly apparent traces of shagreen. It can be near densatus REY, 1884 (Daourie), if this latter is not identical to the true cinereus MOTSCHULSKY, 1860 (eastern Siberia), but it was not possible to find the original specimens for which these 2 names, with insufficient descriptions, have been proposed. L. littoralis also slightly recalls alternus MOTSCHULSKY, 1855 (Switzerland), but the elytra are not alternatively stronger and slightly striated, and the discal spot on the pronotum is more reduced, bisected on the sides. The following notes have been based on the study of one specimen, the unique type of the ♂ sex. In order to have a clear and good comprehensive idea about the species of the Central and northern Asia, countries actually almost inaccessible, we must wait till the lucky hazard provides us with enough materials.

Holotype: "Issyk-Kul" || "J. SAHLB." || "L. littoralis SAHLB"
|| "Mus. Zool. H: fors Spec. typ. n° 770 Laccobius littoralis
J. SAHLB". Size: 2.8 x 1.5 mm.

Punctuated ♂ labrum, without specula. Disc of the head striated in the bottom with distinct frontocular spots. Frons with sharp punctuations. The tip of the last segment of the maxillary palpi dark. Labium slightly convex, not roughly punctuated, only slightly shagreen between the fine and dispersed punctuations.

Light pronotum along the margin, spotted in the middle as in gracilis, the spot touching in the middle the anterior and posterior margins, bisected on the sides, distinctly shagreen towards the bottom, its punctuation sufficiently strong, their posterior angles sufficiently rounded.

Scutum indistinctly shagreen and only forwards.

Punctuated elytra in irregular series, mixed in certain places. The primary and secondary points are found on a narrow obscure lines, separated from one another by a yellow sufficiently large space. Backwards, there is, on each side of the suture, a light spot sufficiently pronounced. The sutural space is striated or wrinkled transversally.

Prosternum, not tectiform, and not carinated, except very slightly and indistinctly forwards. Mesosternum with a small longitudinal keel almost slightly sloping forwards into a very small tooth and pointed in the middle. Metasternum with a small smooth space

prolonged in the middle in front of the posterior margin. Mid and hind femurs smooth at the base, dispersed and finely punctuated. Tarsal claws simple, i.e. not strongly arched as in albipes KUWERT.

L. (S. Str.) bipunctatus (FABRICIUS, 1775).

L. alutaceus THOMSON, 1868.

L. emmeryanus ROTTENBERG, 1874.

L. emeryanus TOURNIER, 1879.

Three specimens from ROTTENBERG collection are labelled L. emeryanus ROTT. "Typus". One of these, a male, is from Ajaccio: this locality is not mentioned in the diagnosis, the specimen is atypical. The other two, ♂♂, are from Palermo. As the diagnosis mention that the author had only one specimen from this locality, we must consider one of the two as atypical. The only typical one is the ♂, because the pronotum is distinctly shagreen as mentioned by the description. The ♀ from Palermo and the ♂ from Ajaccio have their body smooth between the punctuations. I did not see the specimens from the Cava near Napoli (EMERY) mentioned by ROTTENBERG.

The specimen from Palermo (size 2.9 x 1.7 mm) considered by me as ex-typical, has a very transversal and very narrow specula, occupying almost all the width of the labrum, as in bipunctatus (alutaceus). The emeryanus is a synonymous of this latter despite the extremity of the elytra, slightly pointed than most of the Belgian specimens; but a ♂ bipunctatus of Monte Pisani Cucigliana (A. GAGLIARDI) is identical from this point of view. The head is also clearly shagreen.

The other 2 specimens (from Palermo and Ajaccio) with slightly smooth pronotum, do not belong to the var. laevicollis GANGLBAUER, 1904, brought from Hungary and Serbia as it is believed. This so-called variety is synonymous of syriacus GUILLEBEAU, I shall verify this later on.